

GLENCORE

Glencore Nickel Canada
Recycling capabilities



IMPORTANT NOTICE CONCERNING THIS DOCUMENT INCLUDING FORWARD LOOKING STATEMENTS

Given the focus of this document, it is necessarily oriented towards future events and therefore contains statements that are, or may be deemed to be, "forward-looking statements" which are prospective in nature. Such statements may include (without limitation) statements in respect of trends in commodity prices and currency exchange rates; demand for commodities; reserves and resources and production forecasts; expectations, plans, strategies and objectives of management; climate scenarios; sustainability performance (including, without limitation, environmental, social and governance) related goals, ambitions, targets, intentions, visions, milestones and aspirations; approval of certain projects and consummation of certain transactions (including, without limitation, acquisitions and disposals); closures or divestments of certain assets, operations or facilities (including, without limitation, associated costs); capital costs and scheduling; operating costs and supply of materials and skilled employees; financings; anticipated productive lives of projects, mines and facilities; provisions and contingent liabilities; and tax, legal and regulatory developments.

These forward-looking statements may be identified by the use of forward-looking terminology, or the negative thereof including, without limitation, "outlook", "guidance", "trend", "plans", "expects", "continues", "assumes", "is subject to", "budget", "scheduled", "estimates", "aims", "forecasts", "risks", "intends", "positioned", "predicts", "projects", "anticipates", "believes", or variations of such words or comparable terminology and phrases or statements that certain actions, events or results "may", "could", "should", "shall", "would", "might" or "will" be taken, occur or be achieved. The information in this document provides an insight into how we currently intend to direct the management of our businesses and assets and to deploy our capital to help us implement our strategy. The matters disclosed in this document are a 'point in time' disclosure only. Forward-looking statements are not based on historical facts, but rather on current predictions, expectations, beliefs, opinions, plans, objectives, goals, intentions and projections about future events, results of operations, prospects, financial conditions and discussions of strategy, and reflect judgments, assumptions, estimates and other information available as at the date of this document or the date of the corresponding planning or scenario analysis process.

By their nature, forward-looking statements involve known and unknown risks, uncertainties and other factors which may cause actual results, performance or achievements to differ materially from any future event, results, performance, achievements or other outcomes expressed or implied by such forward-looking statements. Important factors that could impact these uncertainties include (without limitation) those disclosed in the risk management section of our latest Annual Report and Half-Year Report (which can each be found on our website). These risks and uncertainties may materially affect the timing and feasibility of particular developments. Other factors which impact risks and uncertainties include, without limitation: the ability to produce and transport products profitably; demand for our products; changes to the assumptions regarding the recoverable value of our tangible and intangible assets; changes in environmental scenarios and related regulations, including (without limitation) transition risks and the evolution and development of the global transition to a low carbon economy; recovery rates and other operational capabilities; health, safety, environmental or social performance incidents; natural catastrophes or adverse geological conditions, including (without limitation) the physical risks associated with climate change; the outcome of litigation or enforcement or regulatory proceedings; the effect of foreign currency exchange rates on market prices and operating costs; actions by governmental authorities, such as changes in taxation or regulation or changes in the decarbonisation plans of other countries; and political uncertainty.

Readers, including (without limitation) investors and prospective investors, should review and take into account these risks and uncertainties (as well as the other risks identified in this document) when considering the information contained in this document. Readers should also note that the high degree of uncertainty around the nature, timing and magnitude of climate-related risks, and the uncertainty as to how the energy transition will evolve, makes it difficult to determine and disclose the risks and their potential impacts with precision. Neither Glencore nor any of its affiliates, associates, employees, directors, officers or advisers, provides any representation, warranty, assurance or guarantee that the occurrence of the events, results, performance, achievements or other outcomes expressed or implied in any forward-looking statements in this document will actually occur. Glencore cautions readers against reliance on any forward-looking statements contained in this document, particularly in light of the long-term time horizon which this document discusses and the inherent uncertainty in possible policy, market and technological developments in the future.

No statement in this document is intended as any kind of forecast (including, without limitation, a profit forecast or a profit estimate), guarantees or predictions of future events or performance and past performance cannot be relied on as a guide to future performance. Neither Glencore nor any of its affiliates, associates, employees, directors, officers or advisers, provides any representation, warranty, assurance or guarantee as to the accuracy, completeness or correctness, likelihood of achievement or reasonableness of any forward-looking information contained in this document.

Glencore operates in a dynamic and uncertain market and external environment. Plans and strategies can and must adapt in response to dynamic market conditions, joint venture decisions, new opportunities that might arise or other changing circumstances. Investors should not assume that our strategy on climate change will not evolve and be updated as time passes. Additionally, a number of aspects of our strategy involve developments or workstreams that are complex and may be delayed, more costly than anticipated or unsuccessful for many reasons, including (without limitation) reasons that are outside of Glencore's control.

There are inherent limitations to scenario analysis and it is difficult to predict which, if any, of the scenarios might eventuate. Scenario analysis relies on assumptions that may or may not be, or prove to be, correct and that may or may not eventuate and scenarios may also be impacted by additional factors to the assumptions disclosed. Given these limitations we treat these scenarios as one of several inputs that we consider in our climate strategy.

Due to the inherent uncertainty and limitations in measuring greenhouse gas (GHG) emissions and operational energy consumption under the calculation methodologies used in the preparation of such data, all CO2e emissions and operational energy consumption data or volume references (including, without limitation, ratios and/or percentages) in this document are estimates. There may also be differences in the manner that third parties calculate or report such data compared to Glencore, which means that third-party data may not be comparable to Glencore's data. For information on how we calculate our emissions and operational energy consumption data, see our latest Basis of Reporting, Climate Report and Extended ESG Data, which can be found on our website.

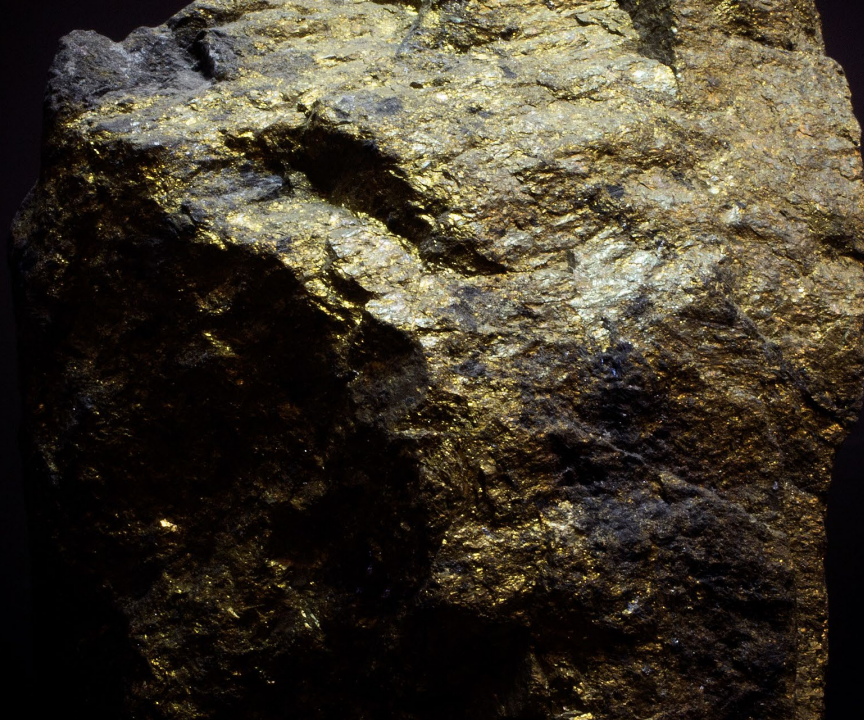
This document does not constitute or form part of any offer or invitation to sell or issue, or any solicitation of any offer to purchase or subscribe for any securities.

Except as required by applicable regulations or by law, Glencore is not under any obligation, and Glencore and its affiliates expressly disclaim any intention, obligation or undertaking, to update or revise any forward-looking statements, whether as a result of new information, future events or otherwise. This document shall not, under any circumstances, create any implication that there has been no change in the business or affairs of Glencore since the date of this document or that the information contained herein is correct as at any time subsequent to its date.

Certain statistical and other information included in this document is sourced from publicly available third-party sources. As such it has not been independently verified and presents the view of those third parties, but may not necessarily correspond to the views held by Glencore and Glencore expressly disclaims any responsibility for, or liability in respect of, and makes no representation or guarantee in relation to, such information (including, without limitation, as to its accuracy, completeness or whether it is current). Glencore cautions readers against reliance on any of the industry, market or other third-party data or information contained in this document.

Subject to any terms implied by law which cannot be excluded, Glencore accepts no responsibility for any loss, damage, cost or expense (whether direct or indirect) incurred by any person as a result of any error, omission or misrepresentation in information in this document.

The companies in which Glencore plc directly and indirectly has an interest are separate and distinct legal entities. In this document, "Glencore", "Glencore group" and "Group" are used for convenience only where references are made to Glencore plc and its subsidiaries in general. These collective expressions are used for ease of reference only and do not imply any other relationship between the companies. Likewise, the words "we", "us" and "our" are also used to refer collectively to members of the Group or to those who work for them. These expressions are also used where no useful purpose is served by identifying the particular company or companies.



Sudbury Integrated Nickel Operations (INO)

Peter Xavier – Vice President

One of the largest recyclers and processors of complex Ni and Co materials

Production of 147.7 kt nickel in 2022 (including third party feed)

A unique suite of sulphide and laterite properties, and operations covering the full technical spectrum (HPAL, chlorine leach, pyro-metallurgical)

Raglan Mine



Nikkelwerk Refinery



INO
Ni: 81.9kt
Cu: 18.5kt
Cu in Conc: 10.6kt
Co: 3.1kt



Sudbury Integrated Nickel Operations

- Nickel Rim South Mine
- Fraser Mine
- Sudbury Smelter
- Onaping Depth (project)
- Nickel Rim Depth (project)

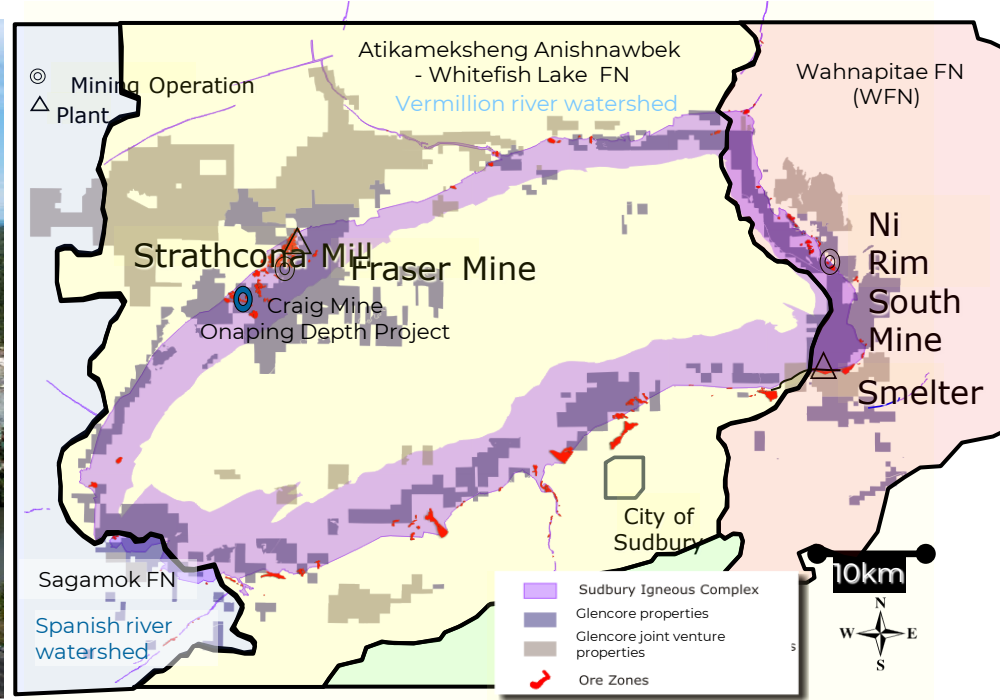


Koniambo
25.4kt Ni in FeNi



Murrin Murrin
40.4kt Ni
3.3kt Co

Sudbury footprint



INO overview

Around 1,200 employees and contractors

ISO 14001 certified sites including Port of Quebec

Indigenous Partnerships

- New Resources Development signed with Wahnapiatae First Nation;
- Memorandum of Understanding signed with Atikameksheng Anishnawbek, Sagamok Anishnawbek and Métis Nations of Ontario

Proactive participation in various community initiatives and programs



Safety performance and awards

- Nickel Rim South Mine – awarded the 2022 John T. Ryan National Trophy for Metal Mines for the best safety performance in Canada from the Canadian Institute of Mining, Metallurgy and Petroleum (CIM), and three times recipient of John T. Ryan Regional Safety Award for achieving the lowest reportable injury rate amongst metal mines in the province of Ontario in 2013, 2014 and 2017
- Fraser Mine - received the 2016 John T. Ryan Regional Safety Award
- All sites are ISO 14001 certified (2023 marks 18 year anniversary of ISO certification at Fraser Mine and Strathcona Mill/Complex, and Exploration)
- Nickel Rim South received 5 Star rating from Caterpillar for the 10th year in a row in 2022 for contamination control (the only underground mine with this certification)
- Sudbury INO's Smelter Process Gas Project (PGP) team received the 2016 CIM Mining & Minerals Project Development Safety Award



Indigenous partnerships

Wahnapitae First Nation

(participation agreement signed in 2008)

- Information sharing / consultation
- Infrastructure projects
- Human resources and environmental working groups
- Water sampling and environmental monitoring
- Cultural support and capacity building

Sagamok

(MOU⁽¹⁾ signed in 2011)

- Information sharing / consultation
- Community and Infrastructure project support

Métis Nation of Ontario

(MOU signed in 2015)

- Information sharing / consultation
- Community and Infrastructure project support

Atikameksheng Anishnawbek

(MOU signed in 2017)

- Information sharing / consultation
- Support on cultural events, education and training initiatives, environmental and/or infrastructure projects

Notes: (1) MOU refers to memorandum of understanding





Sudbury smelter

Sudbury smelter

Hub of Sulphide Operations for Glencore Nickel

- Treats all concentrate from Sudbury & Raglan mines
- Flexibility in processing secondary materials
 - Both in composition and physical condition
- Dedicated pre-treatment calcining/dryer facility



Environmental performance

Process Gas Project (PGP) Phase I & II

Completed in Q2 2021

Project Objectives:

- Reduce Ground Level concentration of SO₂, Ni, Cd and Co and total SO₂ emissions
- Improve hygiene in aisle
- Reduce production losses (less control periods in aisle)
- Reduce particulate & metals (mixing station; matte gran wet gas)

Particulate Emission project (PEP)

Completed in Q3 2021

Project Objectives:

- Reduce emissions of particulate and metals contained (i.e. Ni, Cd and Co)
- Improve hygiene in aisle
- Support commercial recycling business



Custom feed secondary materials

2023 marked Sudbury's 33rd year of processing secondary feed including recyclable end-of-life materials, production scrap and other recycling feeds

Glencore is a key player in the processing of North American Cobalt containing battery scrap materials and is also active in European and Asian scrap markets processing material through its Canadian, Norwegian and Australian facilities



Plating sludges



Superalloy / aerospace scrap



Metal ingots



Metal shot



Battery materials



Turnings / grindings

Sources of nickel and cobalt

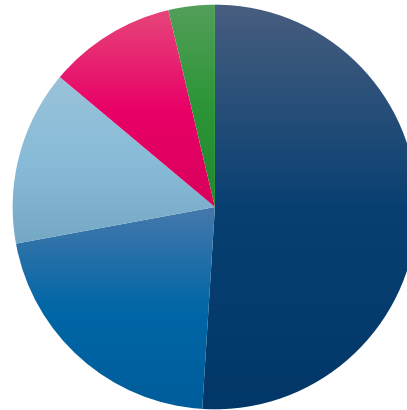
Total feed to the smelter

c.530kdmt per year

Recycled materials and non concentrate materials contribute significantly to nickel and make up the majority of cobalt production

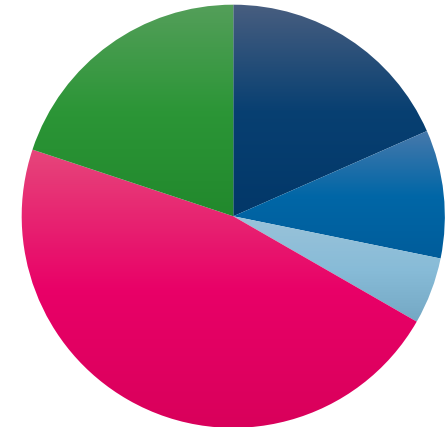
Illustrative share of contributed metal in matte

Nickel (%)



- Raglan
- Strathcona
- 3rd Party Conc
- CF Secondaries*
- Battery

Cobalt (%)



- Raglan
- Strathcona
- 3rd Party Conc
- CF Secondaries*
- Battery

Notes: * Custom feed secondaries

Process flowsheet

